

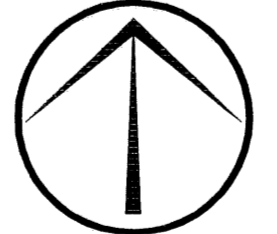
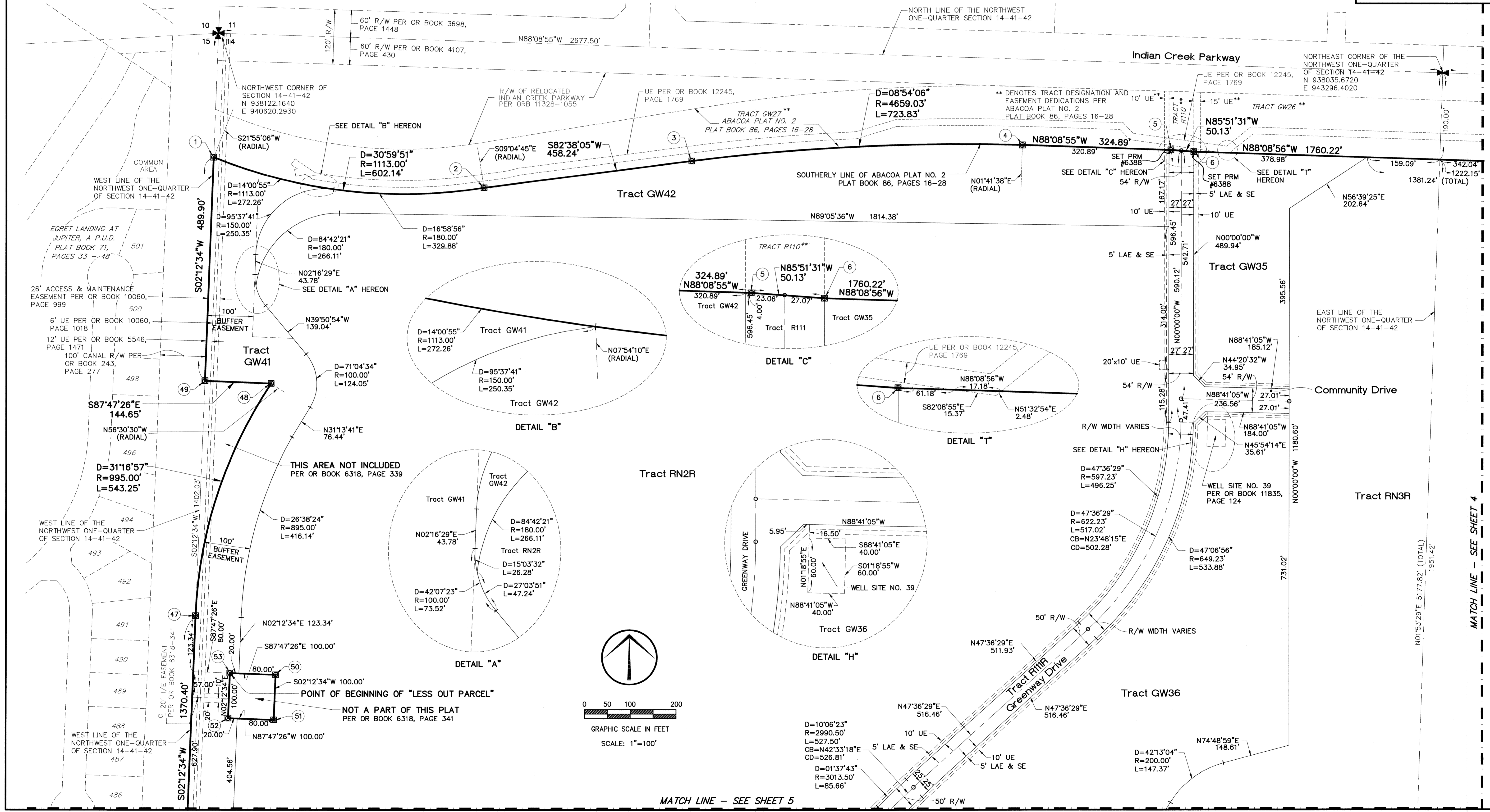
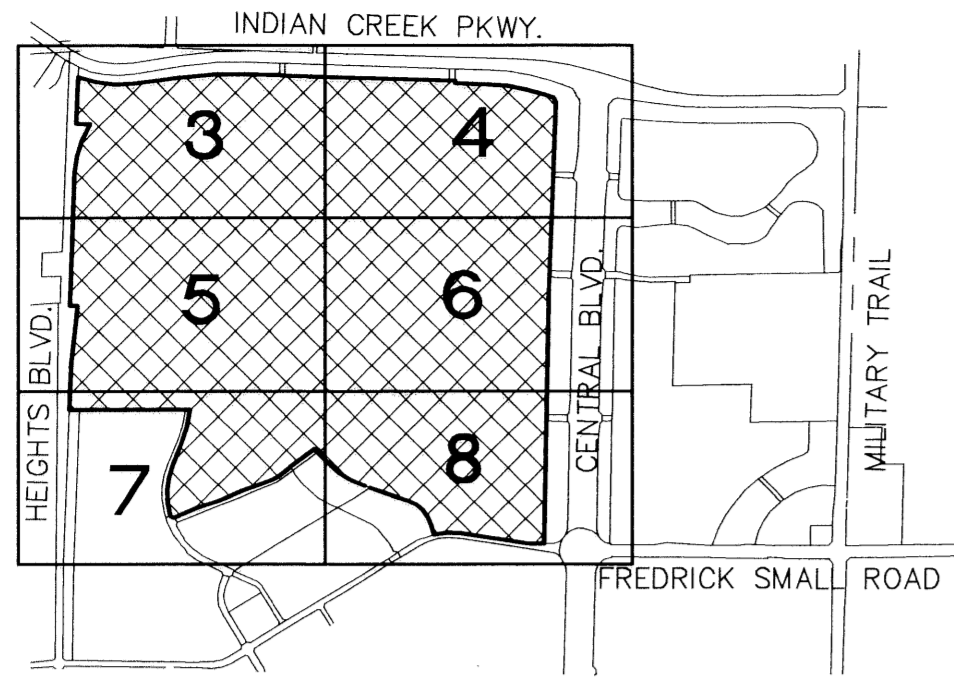
Abacoa - Plat No. 4 Replat

A Portion of Section 14, Township 41 South, Range 42 East and Being a Replat of ABACOA PLAT NO. 4, as recorded in Plat Book 90, Pages 82 through 89, inclusive of the Public Records of Palm Beach County, Florida lying in the Town of Jupiter, Palm Beach County, Florida

This Instrument prepared by Brent A Spencer, P.S.M. of Tetra Tech - WHS
2101 North Andrews Avenue, Suite 300, Fort Lauderdale, Florida 33311
Tetra Tech WHS (Williams, Hatfield and Stoner, Inc.) Authorization No. LB-26

May, 2003

Sheet 3 of 8



0 50 100 200
GRAPHIC SCALE IN FEET
SCALE: 1"=100'

N01°53'29"E 5177.82' (TOTAL)
1951.42'

MATCH LINE - SEE SHEET 4

MATCH LINE - SEE SHEET 5